

concept



ESBE AB
Bruksgatan 22
SE-333 75 Reftele
www.esbe.eu



ESBE System Units
SERIES DxA100



Series DDA111

Series DAA111



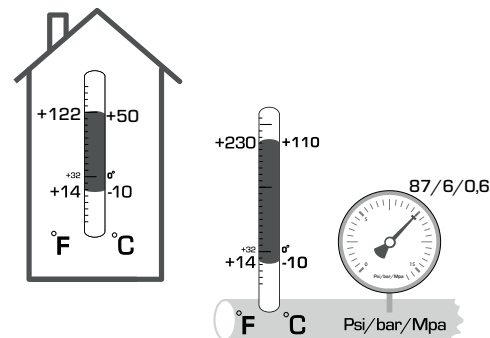
LVD 2014/35/EU
EMC 2014/30/EU
RoHS 2011/65/EU
ErP 2009/125/EU



SI 2016 No. 1101
SI 2016 No. 1091
SI 2012 No. 3032
SI 2010 No. 2617

PED 2014/68/EU, article 4.3
EnEV 2014

SI 2016 No. 1105

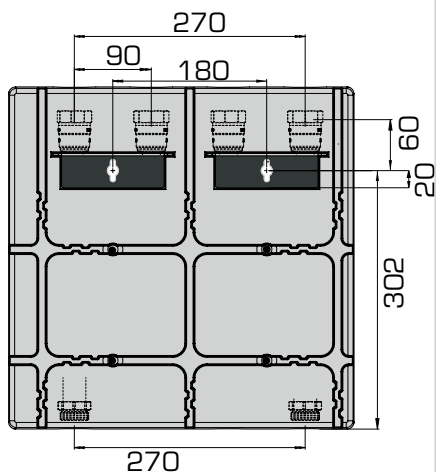


SERIES	FUNCTION
DAA111	
DDA111	

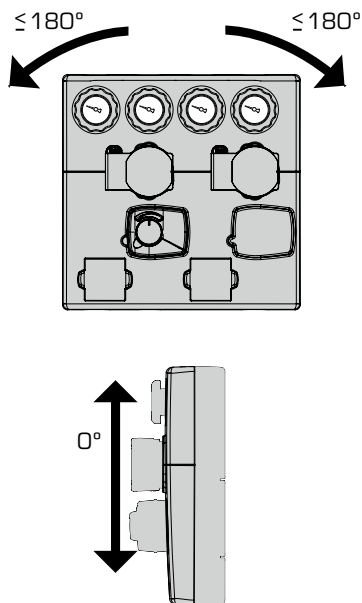
Mtrl.nr: 981411116 • Ritn.nr: 7946 vers. A • Vers. 2023-03-29



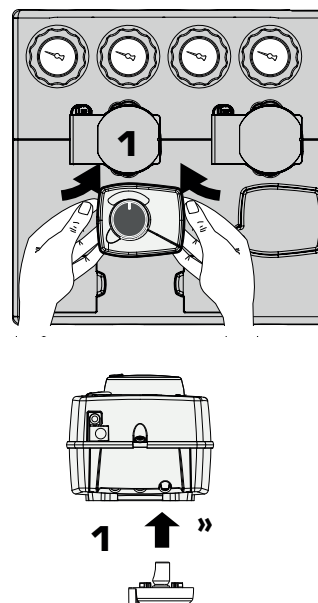
Dimensions



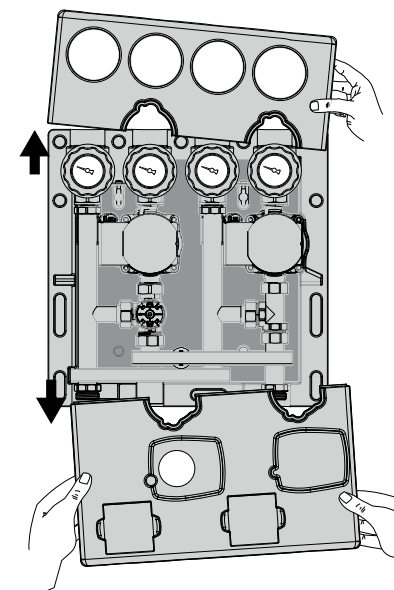
Mounting position



Remove actuator

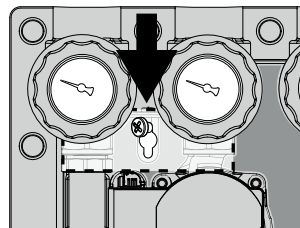
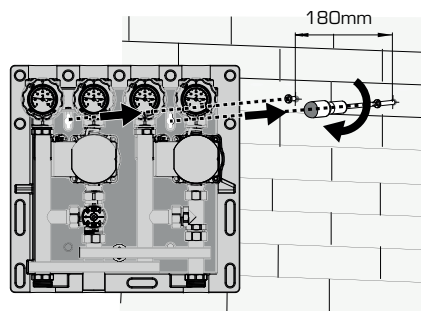


Remove insulation



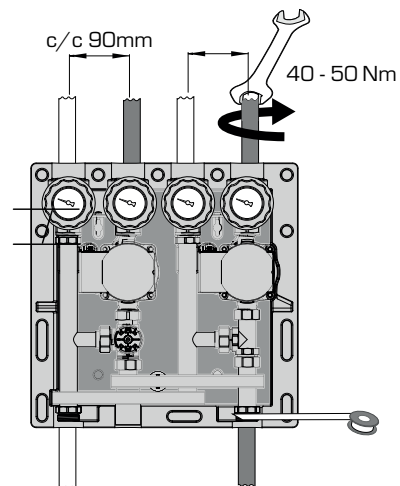
3

Wall mounting



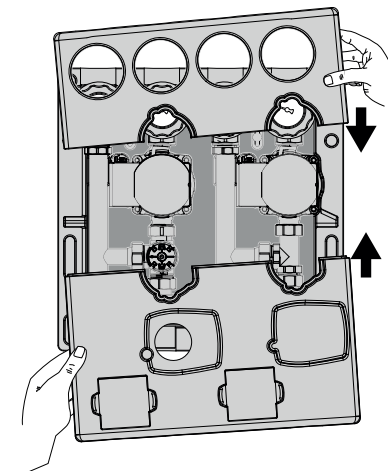
4

Connecting the pipes



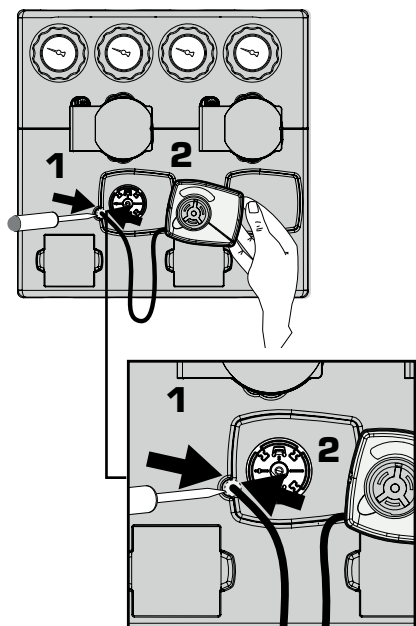
5

Mount the insulation



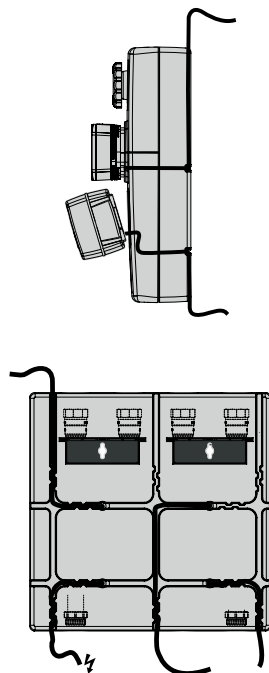
6

Mount the cables



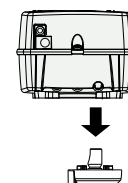
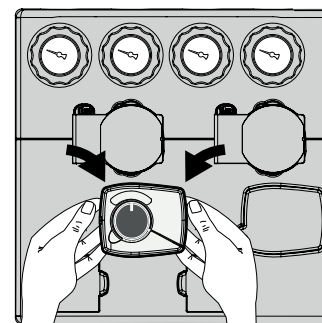
7

Cabling



8

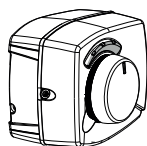
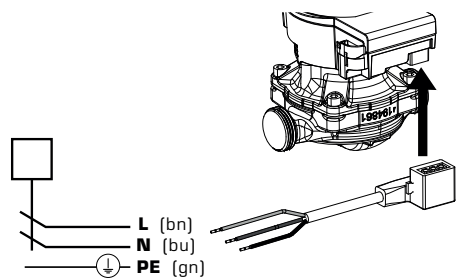
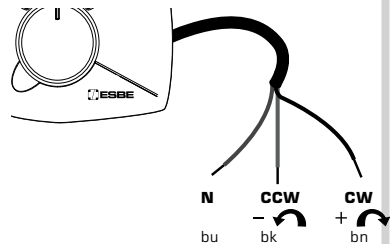
Assemble actuator

**QUICK FIT!**

Click!



Electric installation

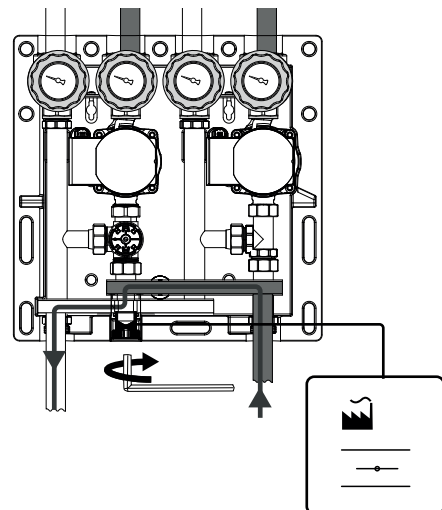


<http://www.esbe.eu/global/en/products/rotary-valves>

9

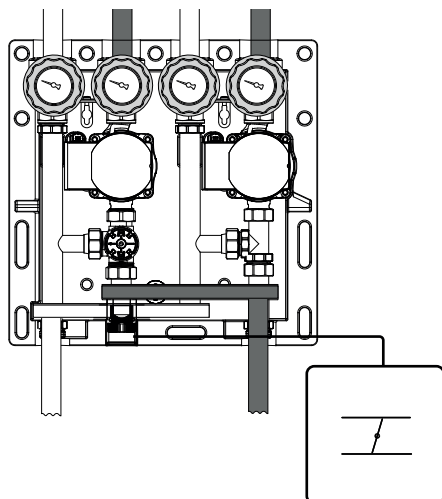


By-pass ON/OFF



6 = By-pass closed
6 = By-pass open

Ø10 mm

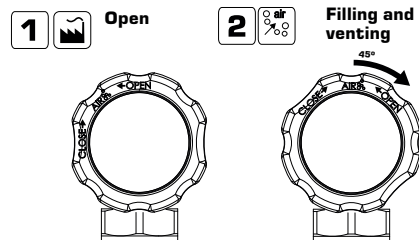


Commissioning

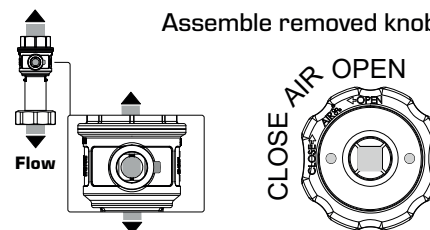
Preparation



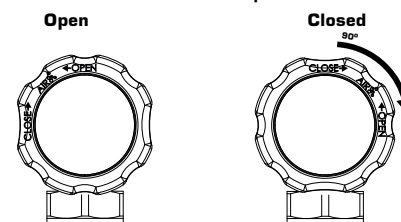
Filling and venting



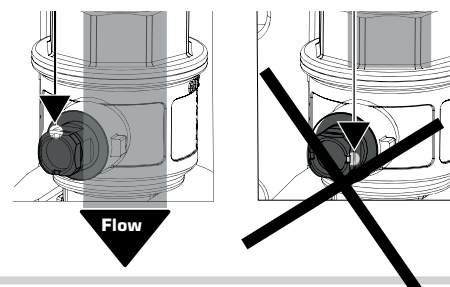
Assemble removed knob



Checkvalve position



White mark, indicate check valve position





WiLo Display

NORMAL OPERATION



FAULT

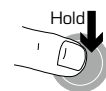


CONTROL MODE
Variable differential pressure - $\Delta p-v$
Constant differential pressure - $\Delta p-c$
Constant speed

PUMP CURVE
I, II, III



Pump Settings



LED display

Status

Hold 8 sec			Locked
Hold 8 sec			Unlocked
Hold 8 sec			Venting
Hold 8 sec			Manual restart
1. Hold 2. 3. 4.			Factory setting

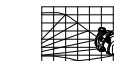


Settings navigations



LED display

Control mode



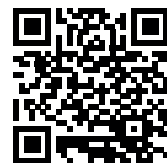
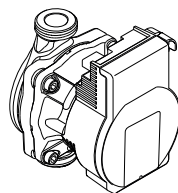
Recommended Alternative

Click 1		Constant speed		
Click 2		Constant speed		
Click 3		Variable differential pressure $\Delta p-v$		
Click 4		Variable differential pressure $\Delta p-v$		
Click 5		Variable differential pressure $\Delta p-v$		
Click 6		Constant differential pressure $\Delta p-c$		
Click 7		Constant differential pressure $\Delta p-c$		
Click 8		Constant differential pressure $\Delta p-c$		
Click 9		Constant speed		



WILO - Faults, Causes and Remedies

LED	Faults	Cause	Remedy
Lights up red	Blocking	Rotor blocked	Activate manual restart or contact customer service
	Contacting/ winding	Winding defective	
Flashes red	Under/overvoltage	Power supply too low/high on mains side	Check mains voltage and operating conditions, and request customer service
	Excessive module temperature	Module interior too warm	
	Short-circuit	Motor current too high	
Flashes red/green	Generator operation	Water is flowing through the pump hydraulics, but there is no mains voltage at the pump	Check the mains voltage, water quantity/pressure and the ambient conditions
	Dry run	Air in the pump	
	Overload	Sluggish motor; pump is operated outside of its specifications (e.g. high module temperature). The speed is lower than during normal operation	



<http://www.esbe.eu/global/en/products/circulation units>



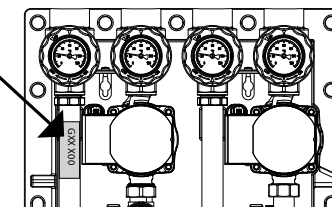
Factory setting



= Factory settings



Nameplate



Expose application info using leaflet

